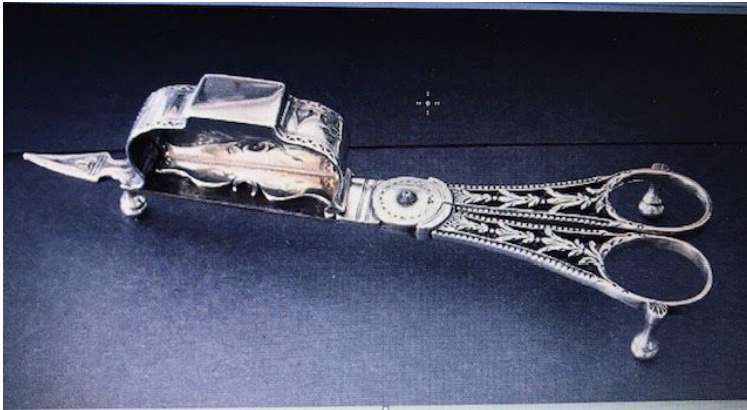


What Am I? Activity



This is a town marker! Granite markers were used to mark boundaries between towns. This one has a W on two of the sides. Waltham and Watertown, perhaps?



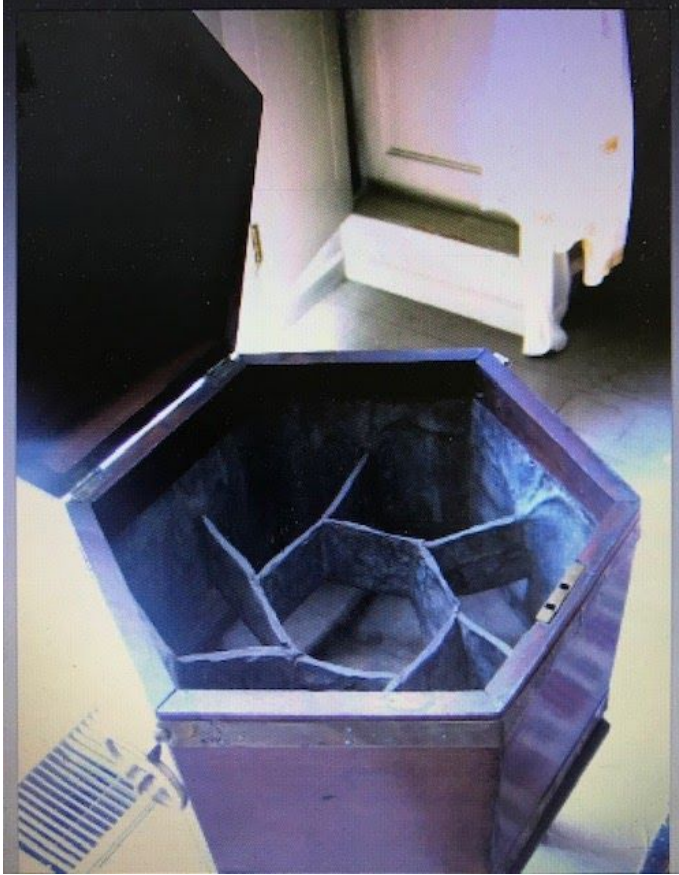
This is a snuffer! It may look like a pair of scissors, and it is, sort of. It was used to trim the burnt portion of a candle wick. The “box” portion collected the ash.



This object is a taperjack! The thin red wax candle, a taper, is wound around and supported by the “jack”. As the taper burns down, it could be unwound to last longer. The small cone shaped part is attached by a thin chain and was used to extinguish the taper.



This object is a food chopper. Food was chopped by hand in a rounded wooden bowl with this tool. The handle is wood while the rest of the object is metal. Can you think of any objects or appliances we use today that are similar to a food chopper in the 1800s? This is part of our What Am I? activity challenges with items from the Gore Place collection.



This object is called a cellarette! The center hole was filled with ice, and the outer holes were filled with wine bottles. This is a late 18th, early 19th century wine chiller. What is something you use today to keep your drinks cold? How is it different from a cellarette? How is it similar?